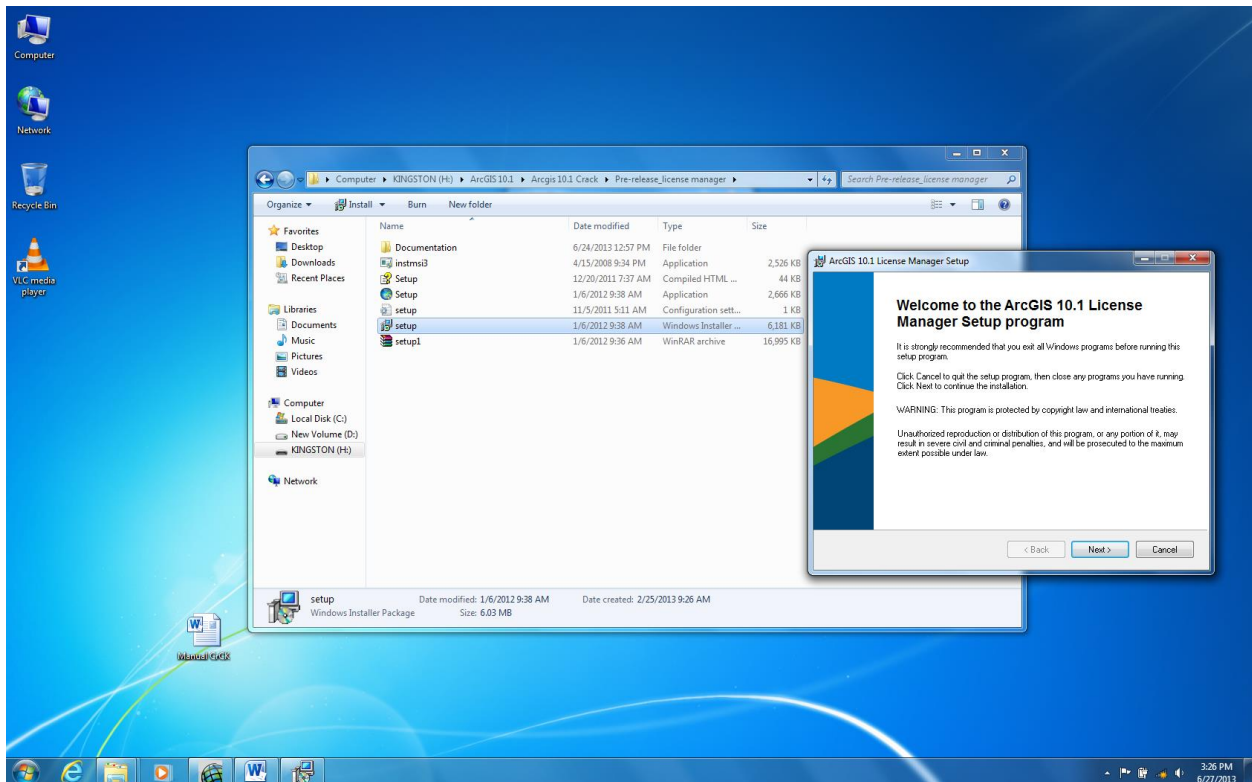
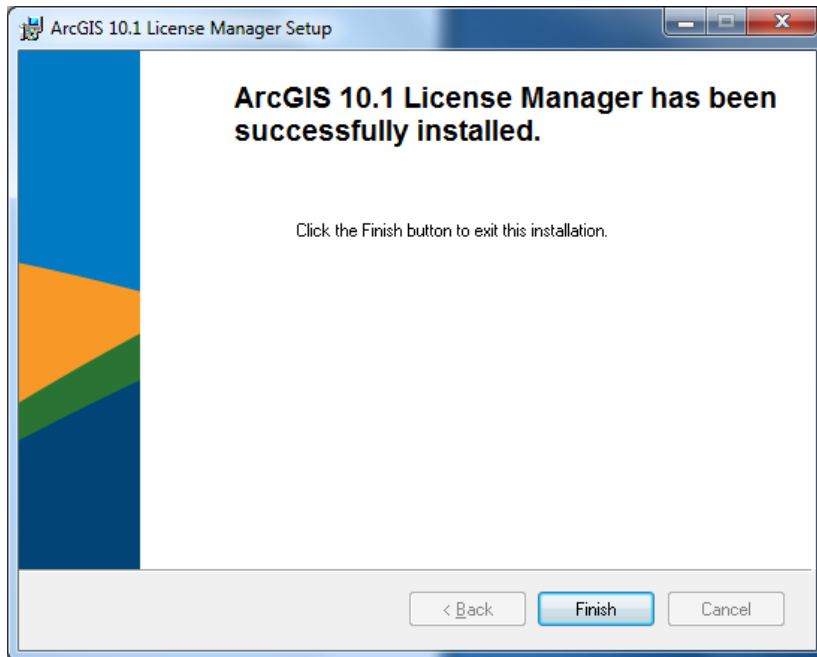


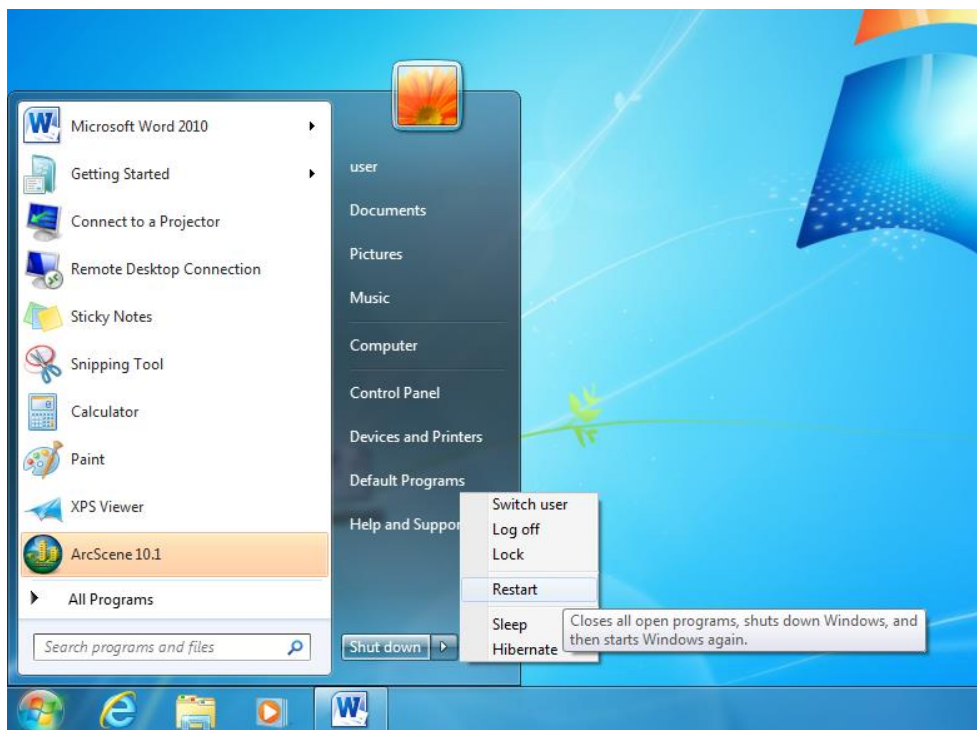
Click cancel

Install ArcGis licence manager dari folder crack

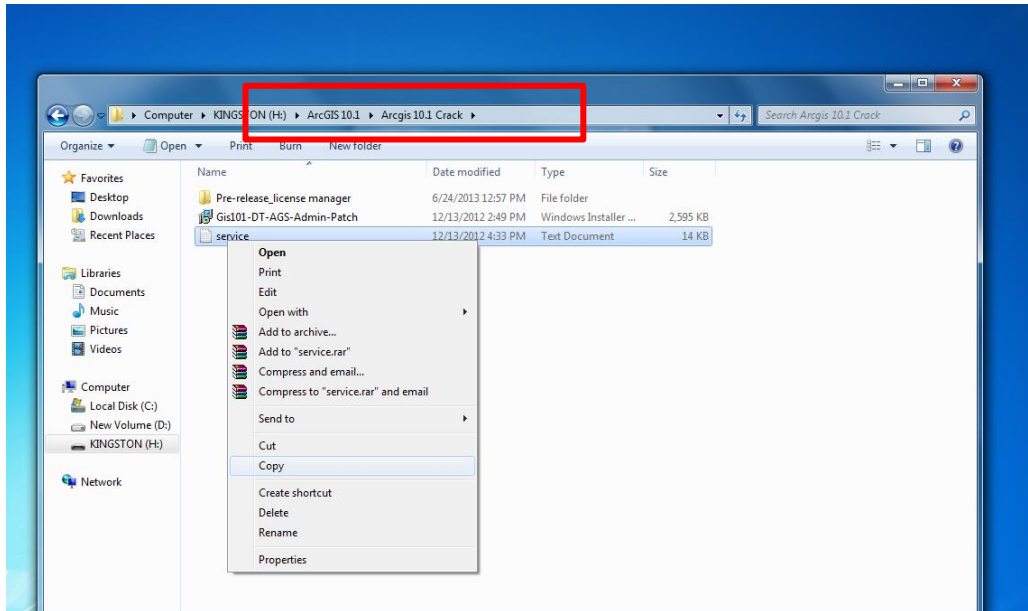




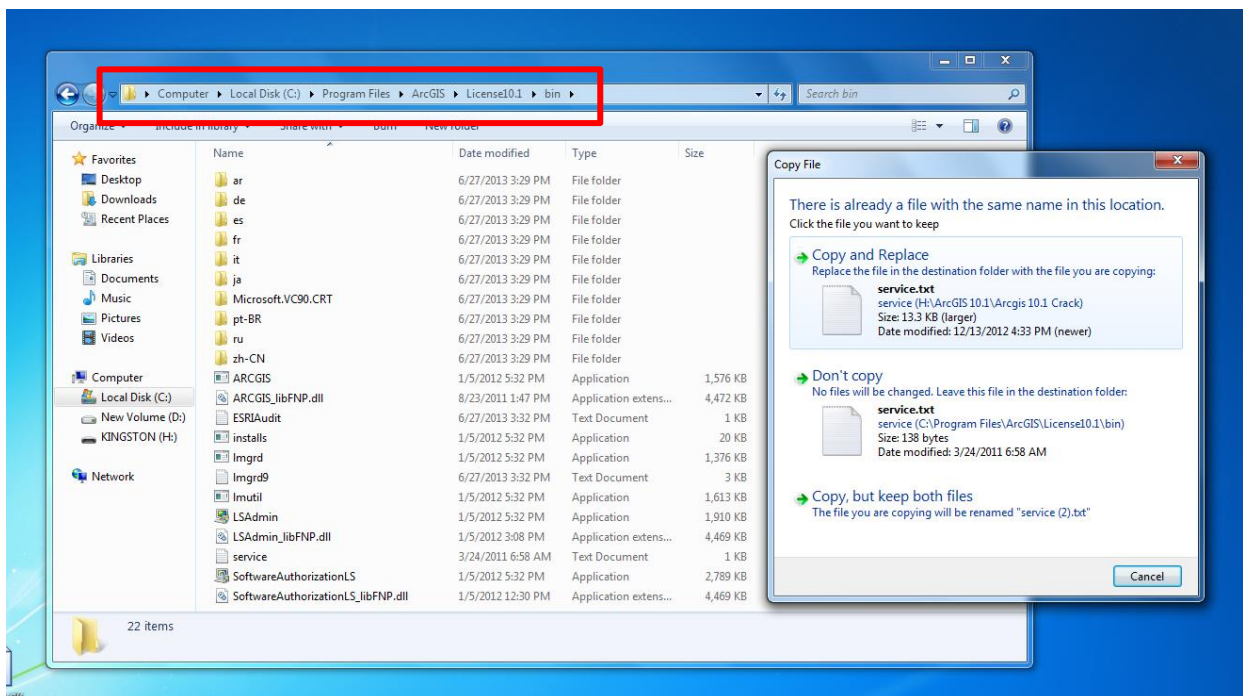
Restart PC and



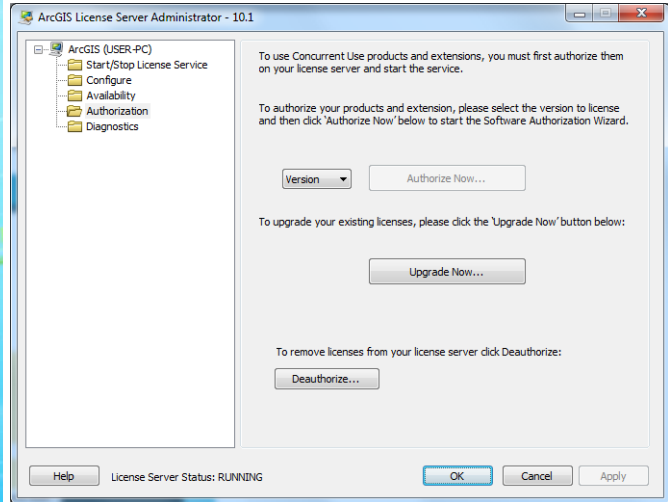
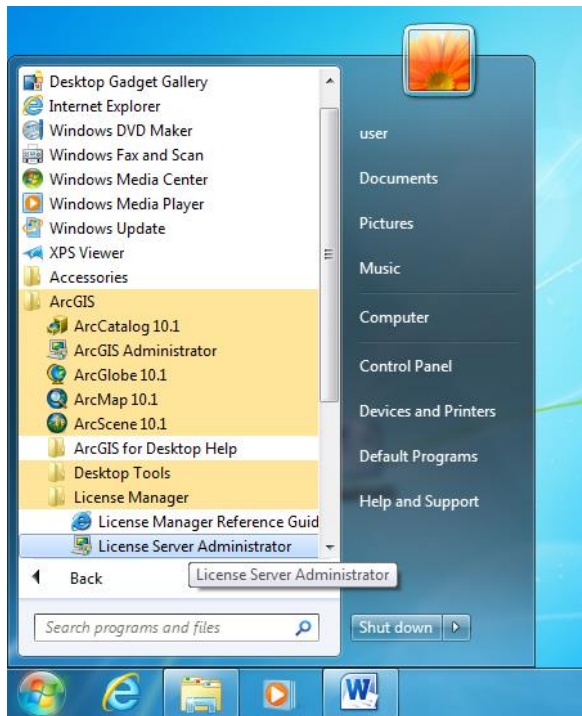
Copy file service dari folder crack



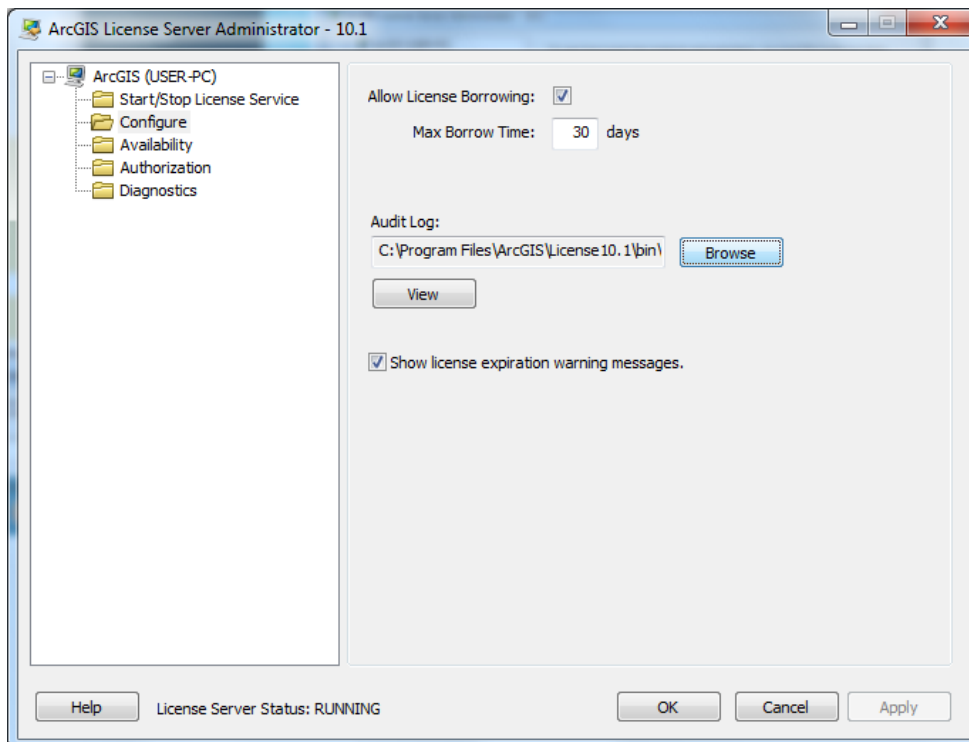
Copy & Replace file service pada directory seperti dibawah



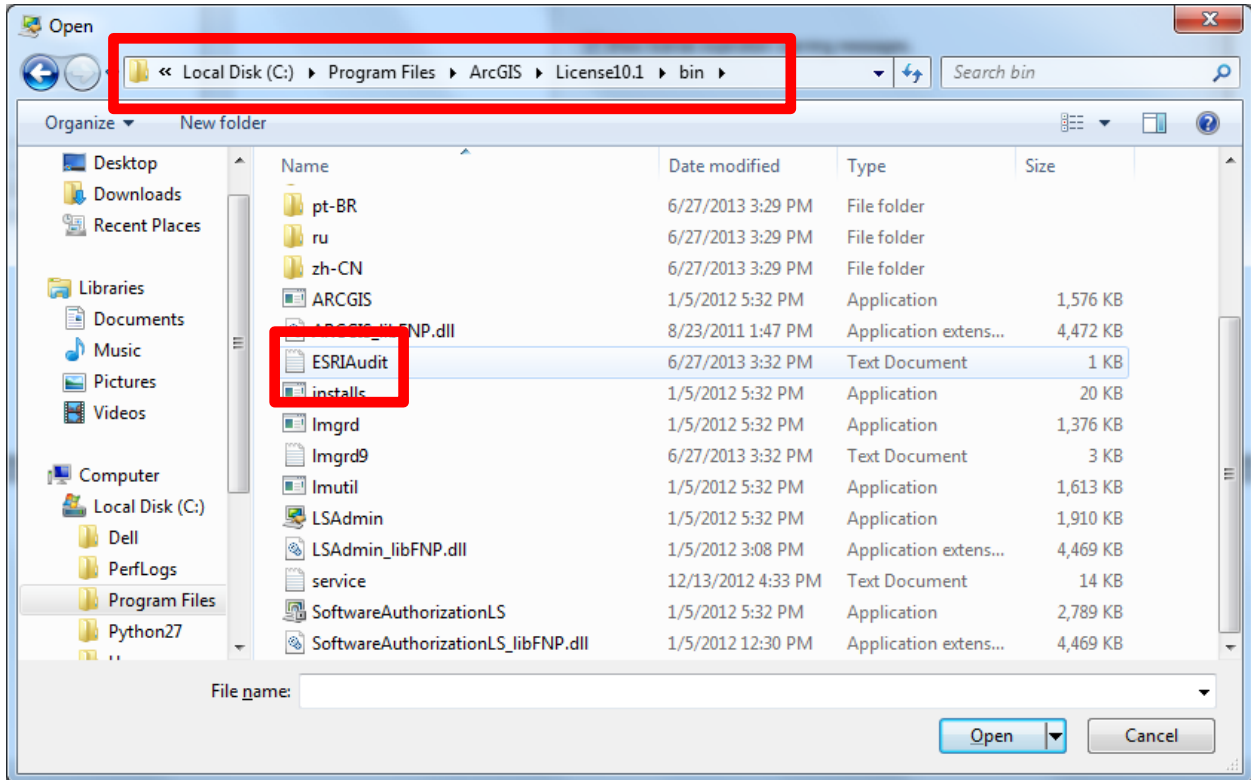
Open 'License Server Administrator'



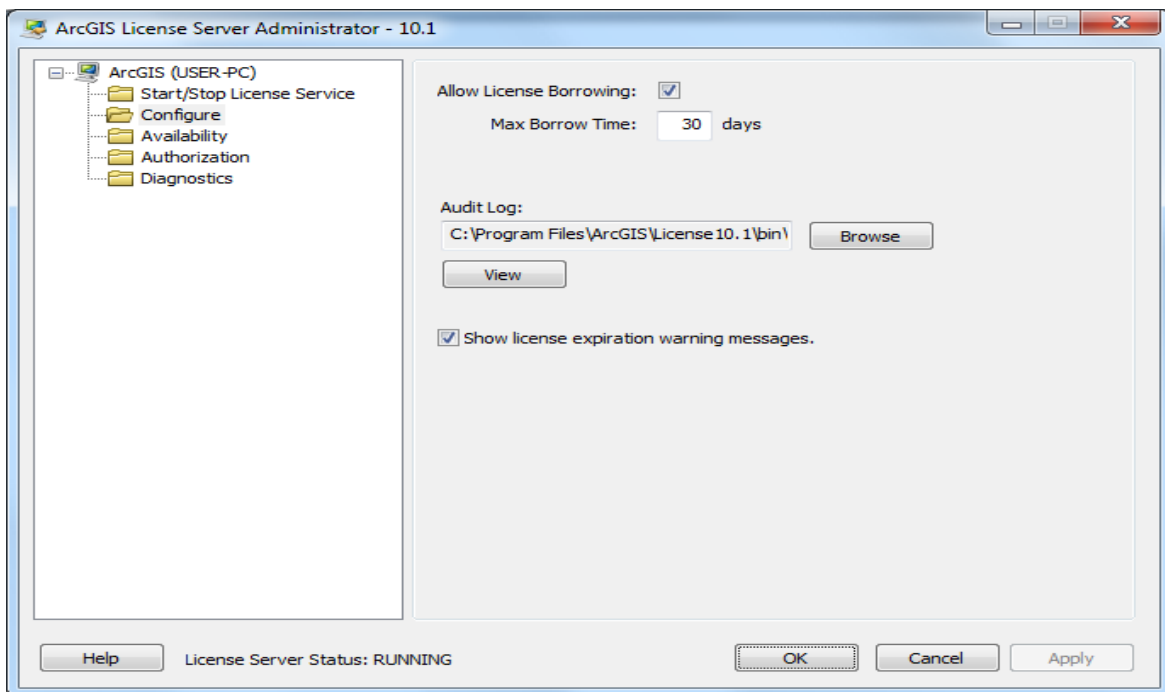
Click pada 'configure' dan seterusnya 'browse'



Kemudian pilih file 'ESRIAudit' pada directory seperti di bawah:

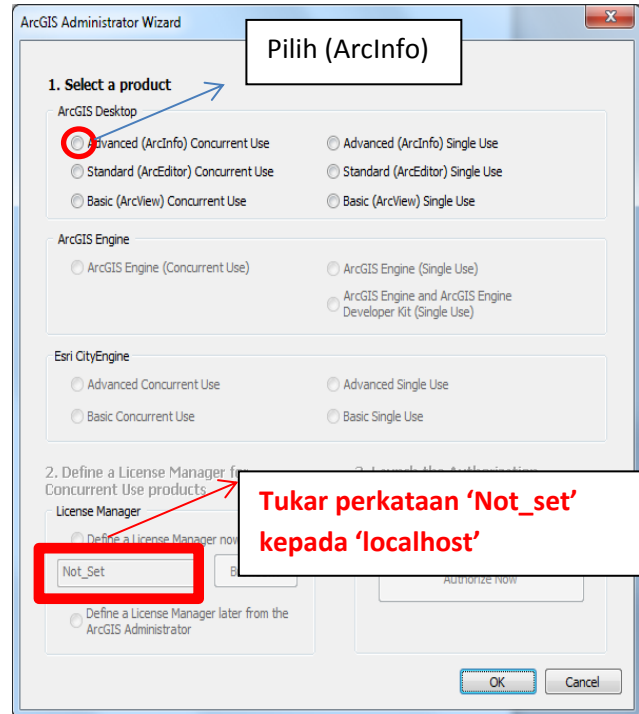
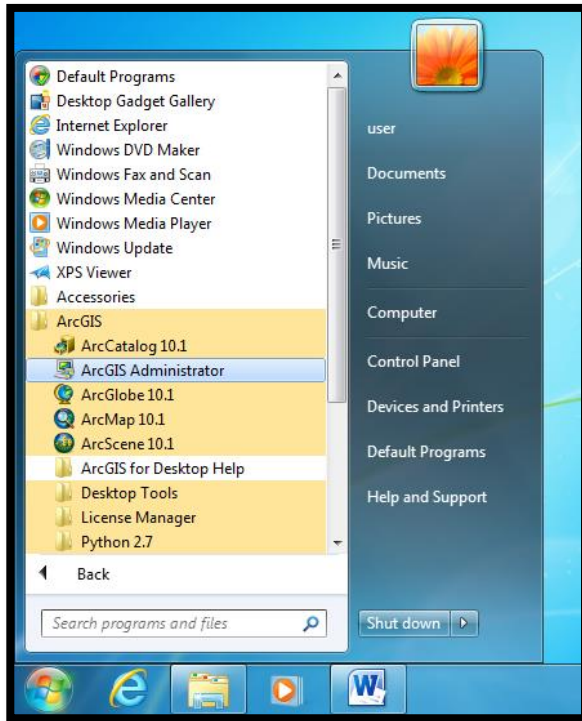


Click 'Apply' seterusnya 'OK'

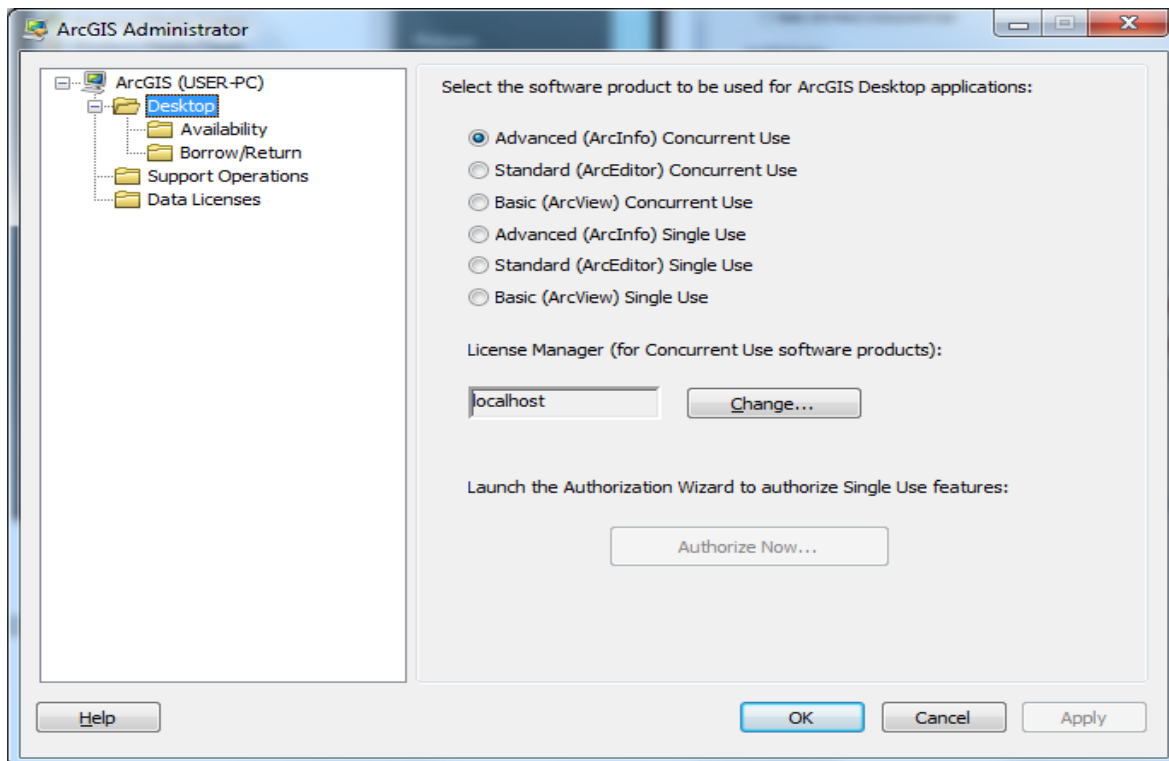




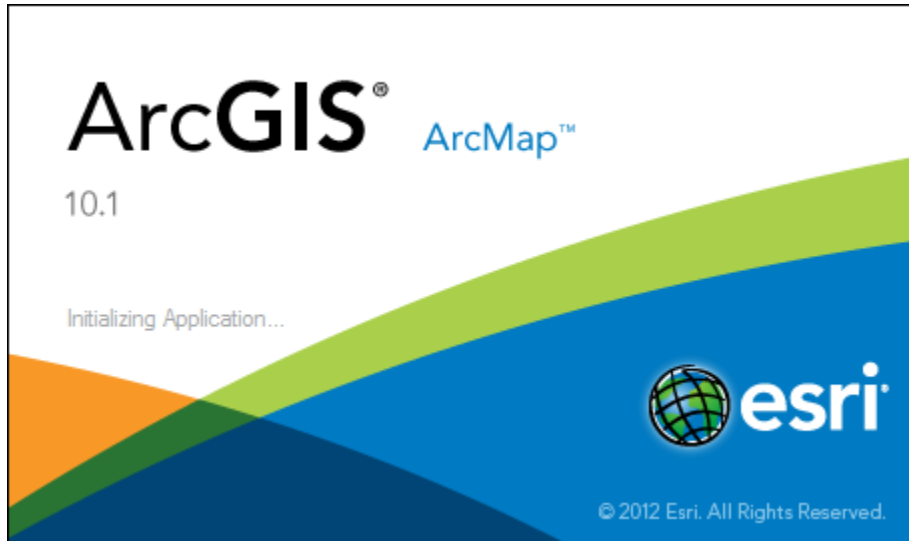
Buka Aplikasi 'ArcGIS Administrator'



Dan paparan di bawah akan terhasil.



Seterusnya, Buka Arc Map anda



Anda telah Berjaya. 😊

