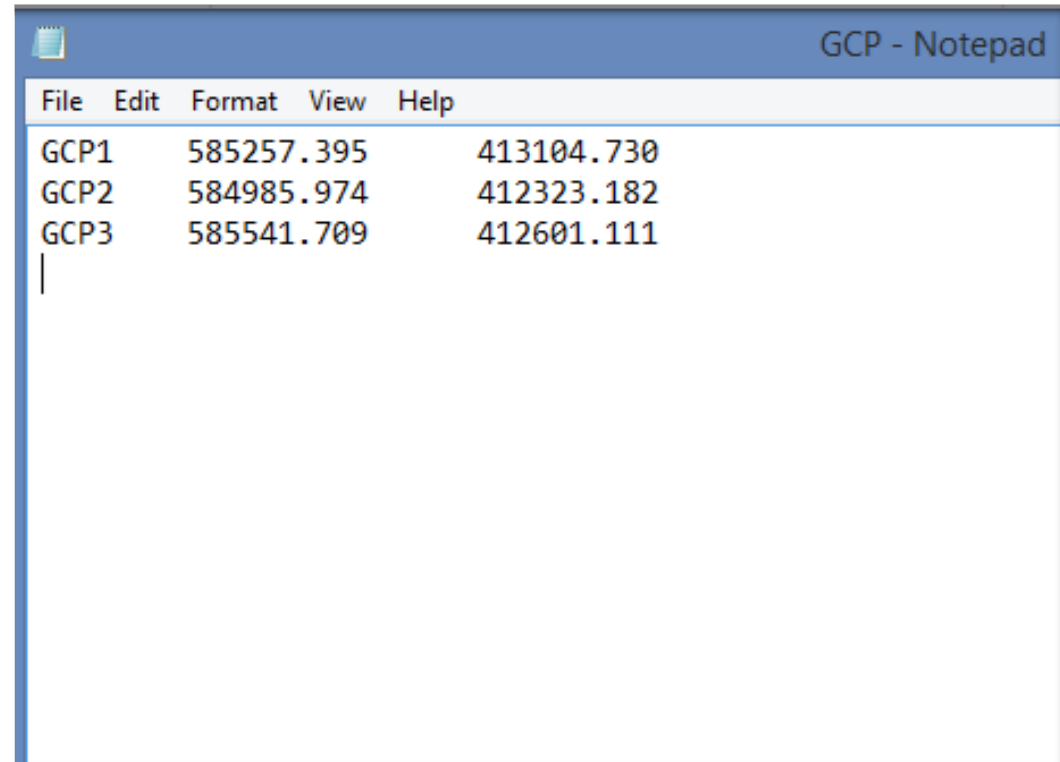


Georeferencing Menggunakan Glober Mapper





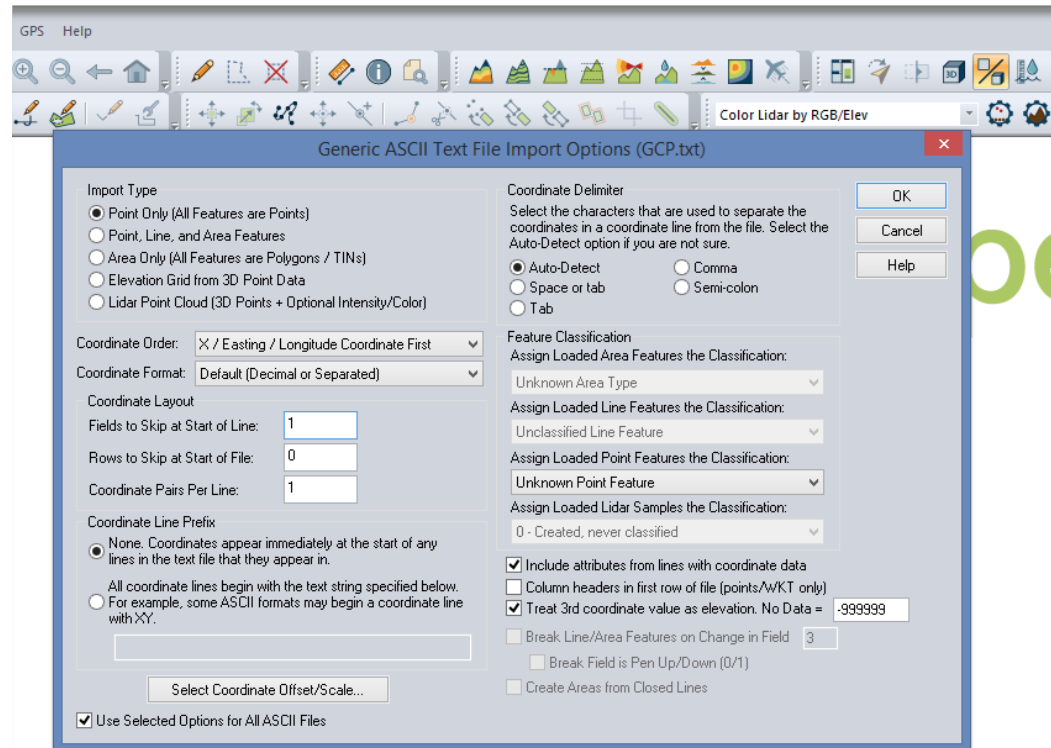
A screenshot of a Notepad window titled "GCP - Notepad". The window contains a table with three rows of GCP coordinates. The table has three columns: the first column lists the GCP identifiers (GCP1, GCP2, GCP3), the second column lists the first coordinate values (585257.395, 584985.974, 585541.709), and the third column lists the second coordinate values (413104.730, 412323.182, 412601.111). The cursor is positioned at the end of the third row.

File	Edit	Format	View	Help
GCP1		585257.395		413104.730
GCP2		584985.974		412323.182
GCP3		585541.709		412601.111

Rajah 1 : Maklumat Koordinat GCP di sediakan

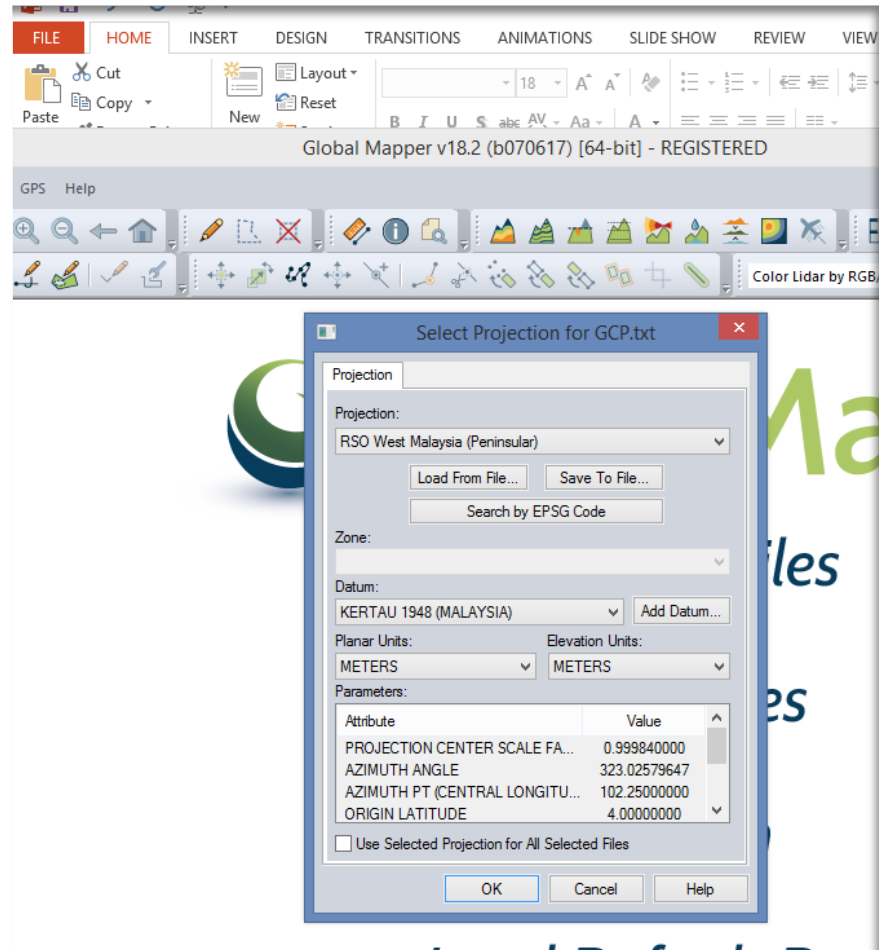


Rajah 2 : Load maklumat *raster*

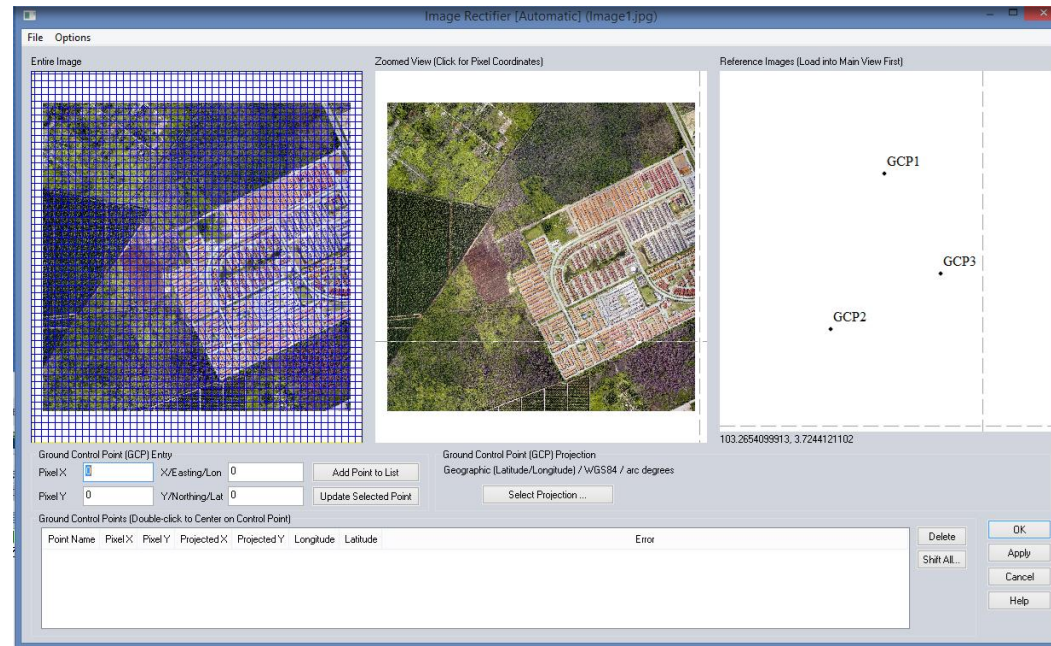


Load Default Data

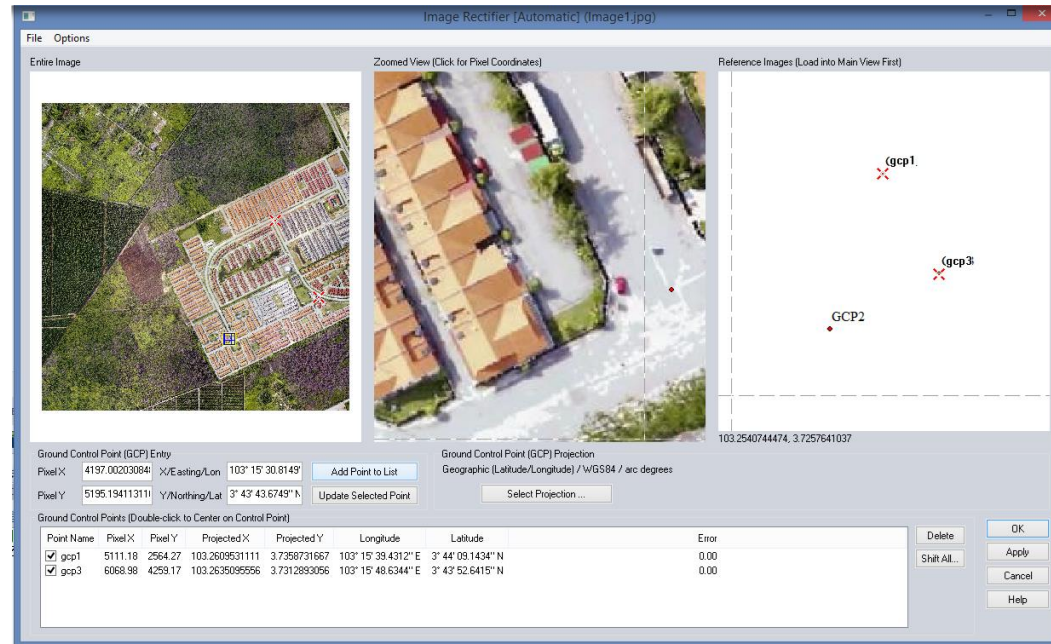
Rajah 3 : Lihat koordinat *layout*



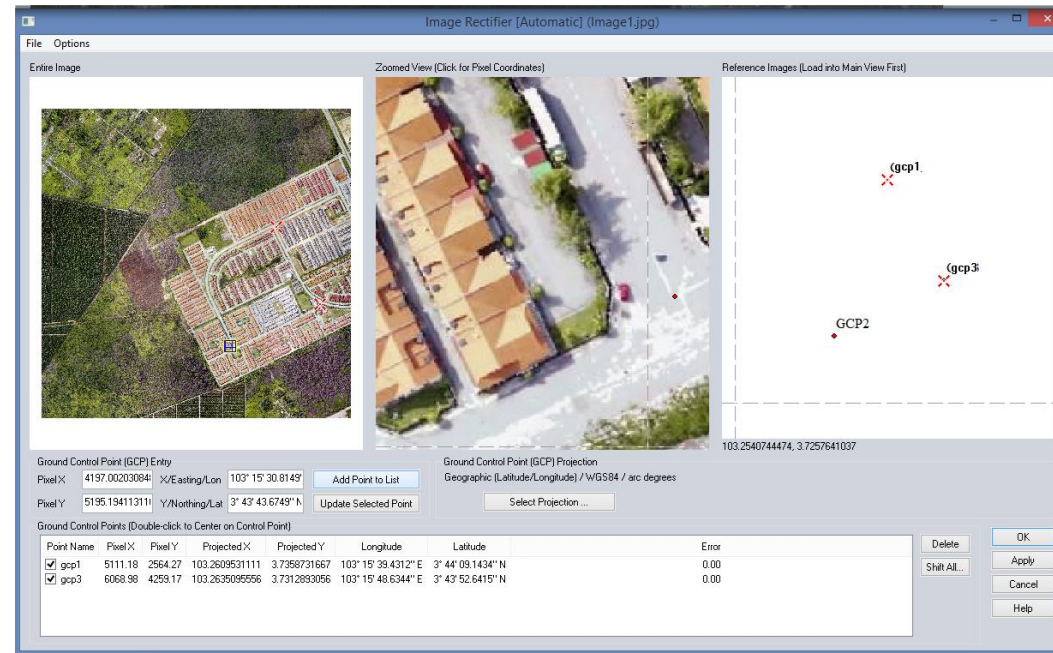
Rajah 4 : Pilih Koordinat Rujukan



Rajah 5 : Tandakan GCP diatas *Raster*



Rajah 6 : Tandakan GCP *Reference Images*



Rajah 7 : Dipaparkan koordinat GCP

Imej Telah Siap Di *Georeferencing*