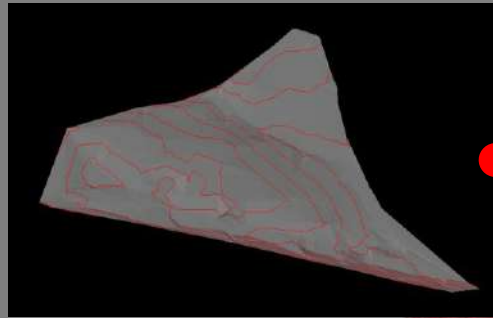
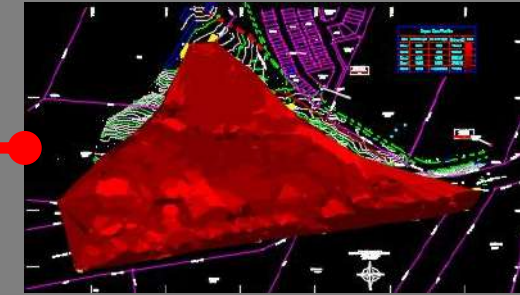


BUILDING INFORMATION MODELLING (BIM)

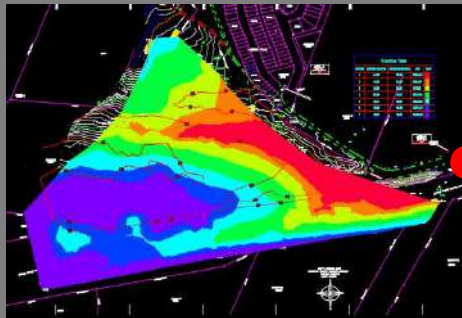
BIM WORK PROCESS



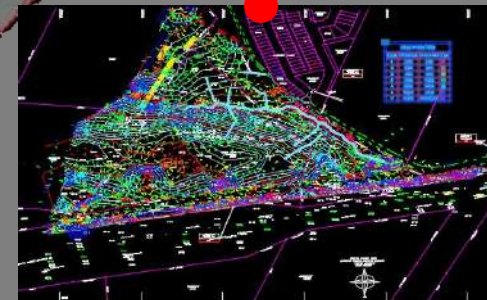
*Contour
Analysis*



*Slope
Analysis*



*Platform
Analysis*

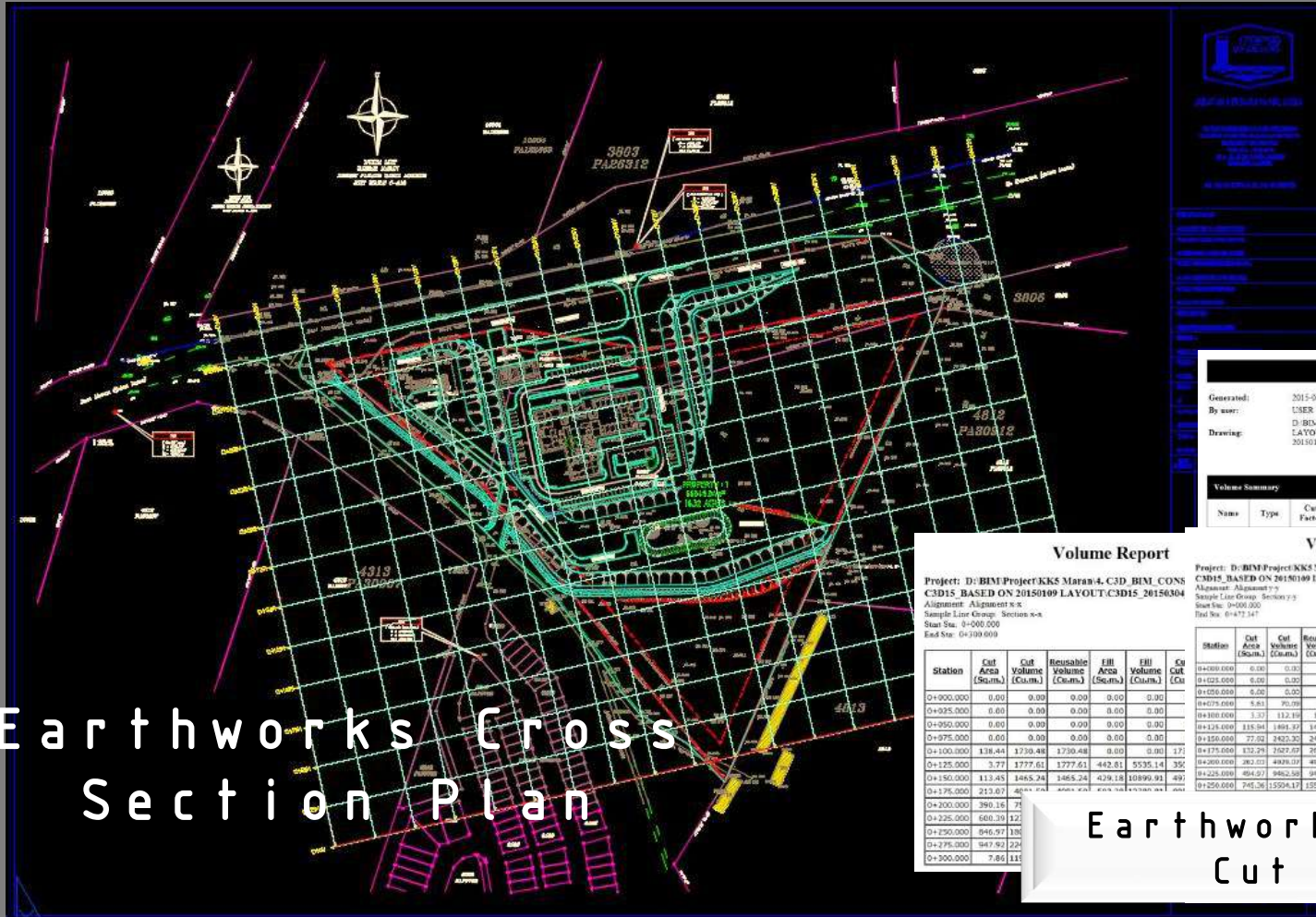


*Water Flow
Analysis*

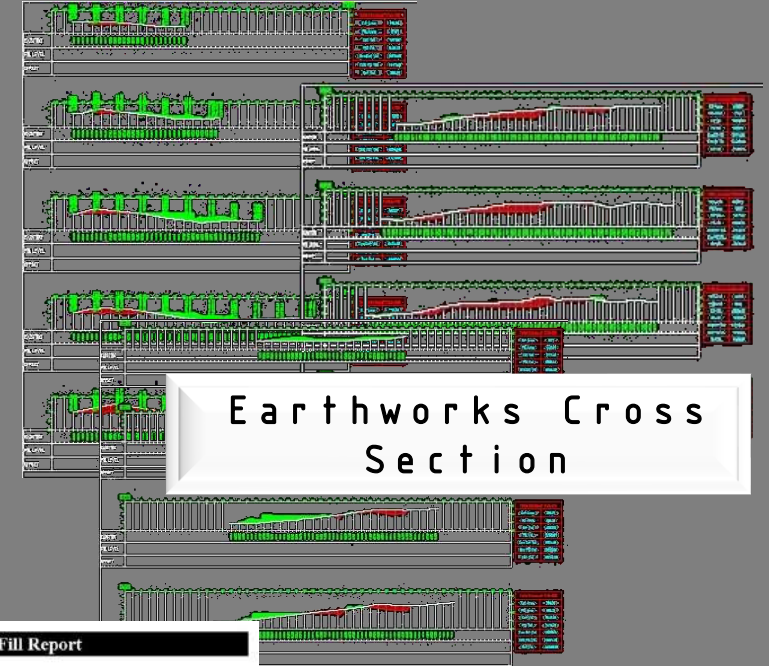
BIM USES :
Site Analysis

BUILDING INFORMATION MODELLING (BIM)

BIM WORK PROCESS



Earthworks Cross Section Plan



Earthworks Cross Section

Cut/Fill Report

Generated: 2015-03-05 13:24:48
 By user: USER
 Drawing: D:\BIM\Project\KKS\Maran4_C3D_BIM_CONSTRUCTION2_CID15_BASED ON 20150109 LAYOUT.D BIM\Project\KKS\Maran4_C3D_BIM_CONSTRUCTION2_CID15_BASED ON 20150109 LAYOUT\CID15_20150109_0 Final Surface2.dwg

Volume Summary

Name	Type	Cut Factor	Fill Factor	3d Area (sq.m)	Cut (Cu. M)	Fill (Cu. M)	Net (Cu. M)
							35336.43+Cut
							Net (Cu. M)
							35336.43+Cut

Project: D:\BIM\Project\KKS\Maran4_C3D_BIM_CONSTRUCTION2_CID15_BASED ON 20150109 LAYOUT.D BIM\Project\KKS\Maran4_C3D_BIM_CONSTRUCTION2_CID15_BASED ON 20150109 LAYOUT\CID15_20150109_0 Final Surface2.dwg
 Alignment: Alignment 1
 Sample Line Group: Section 1
 Start Sta: 0+000.000
 End Sta: 0+777.147

Volume Report

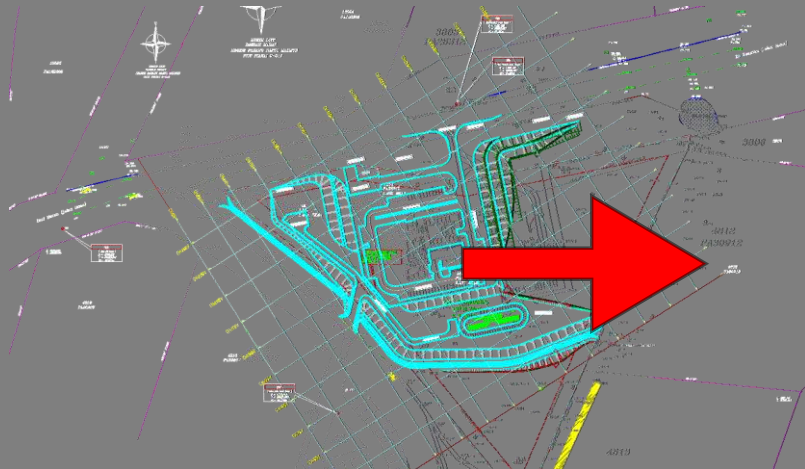
Station	Cut Area (Sq.m)	Cut Volume (Cu.m)	Reusable Volume (Cu.m)	Fill Area (Sq.m)	Fill Volume (Cu.m)	Cuts, Reusable Vol. (Cu.m)	Cuts, Fill Vol. (Cu.m)	Cuts, Net Vol. (Cu.m)
0+000.000	0.00	0.00	0.00	0.00	0.00	0.00	0.00	0.00
0+025.000	0.00	0.00	0.00	0.00	0.00	0.00	0.00	0.00
0+050.000	0.00	0.00	0.00	0.00	0.00	0.00	0.00	0.00
0+075.000	5.81	70.98	30.08	32.33	377.82	16.09	70.98	-202.93
0+100.000	3.37	112.19	112.19	26.96	654.11	182.28	182.28	-006.05
0+125.000	316.94	1481.57	1481.57	1481.57	1481.57	1481.57	1481.57	252.20
0+150.000	77.02	2423.25	2423.25	2423.25	2423.25	2423.25	2423.25	428.85
0+175.000	132.29	2527.07	2527.07	946.79	9953.98	6724.62	6724.62	4837.26
0+200.000	282.03	4938.03	4938.03	4829.07	12689.18	11853.89	11853.89	13771.78
0+225.000	484.07	9462.58	9462.58	2074.63	8459.12	21116.29	21116.29	15763.90
0+250.000	745.26	15594.12	15594.12	92.15	3747.23	36812.07	26625.45	29631.41

Earthworks Report - Cut & Fill

BIM USES:
Site Analysis

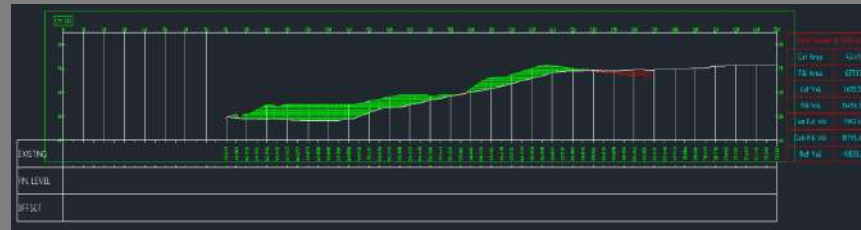
BUILDING INFORMATION MODELLING (BIM)

BIM WORK PROCESS



Alignment: X-X SECTION
 Sample Line Group: SL Collection - 1
 Start Sta: 0+000.000
 End Sta: 0+583.890

Station	Cut Area (Sq.m)	Cut Volume (Cu.m)	Reusable Volume (Cu.m)	Fill Area (Sq.m)	Fill Volume (Cu.m)	Cum. Cut Vol. (Cu.m)	Cum. Reusable Vol. (Cu.m)	Cum. Fill Vol. (Cu.m)	Cum. Net Vol. (Cu.m)
0+000.000	0.00	0.00	0.00	0.00	0.00	0.00	0.00	0.00	0.00
0+025.000	0.00	0.00	0.00	0.00	0.00	0.00	0.00	0.00	0.00
0+050.000	0.00	0.00	0.00	0.00	0.00	0.00	0.00	0.00	0.00
0+075.000	0.00	0.00	0.00	0.00	0.00	0.00	0.00	0.00	0.00
0+100.000	0.00	0.00	0.00	0.00	0.00	0.00	0.00	0.00	0.00
0+125.000	0.00	0.00	0.00	0.00	0.00	0.00	0.00	0.00	0.00
0+150.000	0.00	0.00	0.00	0.00	0.00	0.00	0.00	0.00	0.00
0+175.000	0.00	0.00	0.00	0.00	0.00	0.00	0.00	0.00	0.00
0+200.000	0.00	0.00	0.00	0.00	0.00	0.00	0.00	0.00	0.00
0+225.000	0.00	0.00	0.00	0.00	0.00	0.00	0.00	0.00	0.00
0+250.000	22.42	280.33	280.33	12.83	223.14	280.33	280.33	223.14	57.19
0+275.000	383.28	5071.26	5071.26	12.18	375.42	5351.69	5351.69	598.56	4753.13
0+300.000	725.01	13078.61	13078.61	26.65	485.44	19230.20	19230.20	1094.80	18135.40
0+325.000	636.00	17137.57	17137.57	178.83	2569.25	26467.88	26467.88	3653.25	32814.62
0+350.000	320.76	11059.50	11059.50	447.57	7830.77	48427.38	48427.38	11484.02	36943.36
0+375.000	105.29	3325.68	3325.68	673.44	14012.65	53753.06	53753.06	25496.67	28256.39
0+400.000	1.26	1331.88	1331.88	645.13	16482.30	55084.94	55084.94	41978.98	13105.97
0+425.000	80.16	2672.67	2672.67	211.46	10707.53	55852.61	55852.61	52686.31	3166.10
0+450.000	26.55	1208.81	1208.81	162.66	3689.03	57061.61	57061.61	57275.54	-314.12
0+475.000	148.47	2312.75	2312.75	1.52	2064.87	59274.17	59274.17	59440.41	-166.24
0+500.000	0.00	1855.90	1855.90	0.00	19.96	61230.06	61230.06	59459.47	1770.59
0+525.000	0.00	0.00	0.00	0.00	0.00	61230.06	61230.06	59459.47	1770.59
0+550.000	0.00	0.00	0.00	0.00	0.00	61230.06	61230.06	59459.47	1770.59
0+575.000	0.00	0.00	0.00	0.00	0.00	61230.06	61230.06	59459.47	1770.59
0+583.890	0.00	0.00	0.00	0.00	0.00	61230.06	61230.06	59459.47	1770.59



Laporan Anggaran Kos Kerja Tanah bagi Projek

Cadangan aras tanah dari arkitek adalah 5.5m. Purata tambakan 1 hingga 2 m dari aras tanah sediaada iaitu purata 3.5m hingga 4.5m

Cut/Fill Report

Generated: 2017-06-13 16:22:26
 By user: jkrUBIM-01
 Drawing: 2017-06-13a_ikrC18-2_Project-Cut and Fill Report and Estimation

Name	Type	Cut Factor	Fill Factor	3d Area (sq.m)	Cut (Cu. M.)	Fill (Cu. M.)	Net (Cu. M.)
VOLUME	fill	1.150	1.150	283497.20	707.01*	390834.83*	390127.82*
Totals				3d Area (sq.m)	Cut (Cu. M.)	Fill (Cu. M.)	Net (Cu. M.)
Total				283497.20	707.01*	390834.83*	390127.82*

* Value adjusted by cut or fill Factor other than 1.0

Anggaran kos kerja tanah :

Rate (per m3) x Fill (Cu M) = Anggaran kos kerja tanah ≤ Budget

BIM USES:
Cost Estimation